

CAMBRIDGE INTERNATIONAL EXAMINATIONS

GCE Advanced Subsidiary Level and GCE Advanced Level

MARK SCHEME for the October/November 2012 series

9713 Applied ICT

9713/02

Paper 2 (Practical Test A), maximum raw mark 120

This mark scheme is published as an aid to teachers and candidates, to indicate the requirements of the examination. It shows the basis on which Examiners were instructed to award marks. It does not indicate the details of the discussions that took place at an Examiners' meeting before marking began, which would have considered the acceptability of alternative answers.

Mark schemes should be read in conjunction with the question paper and the Principal Examiner Report for Teachers.

Cambridge will not enter into discussions about these mark schemes.

Cambridge is publishing the mark schemes for the October/November 2012 series for most IGCSE, GCE Advanced Level and Advanced Subsidiary Level components and some Ordinary Level components.

Page 2	Mark Scheme: Teachers' version	Syllabus	Paper
	GCE AS/A LEVEL – October/November 2012	9713	02

9713 – November 2012

AS Level – Paper 2 – Practical Test

No marks to be awarded for any printout not containing the candidate name,
candidate number and centre number

Page 3	Mark Scheme: Teachers' version	Syllabus	Paper
	GCE AS/A LEVEL – October/November 2012	9713	02

Candidate name, centre number and candidate number

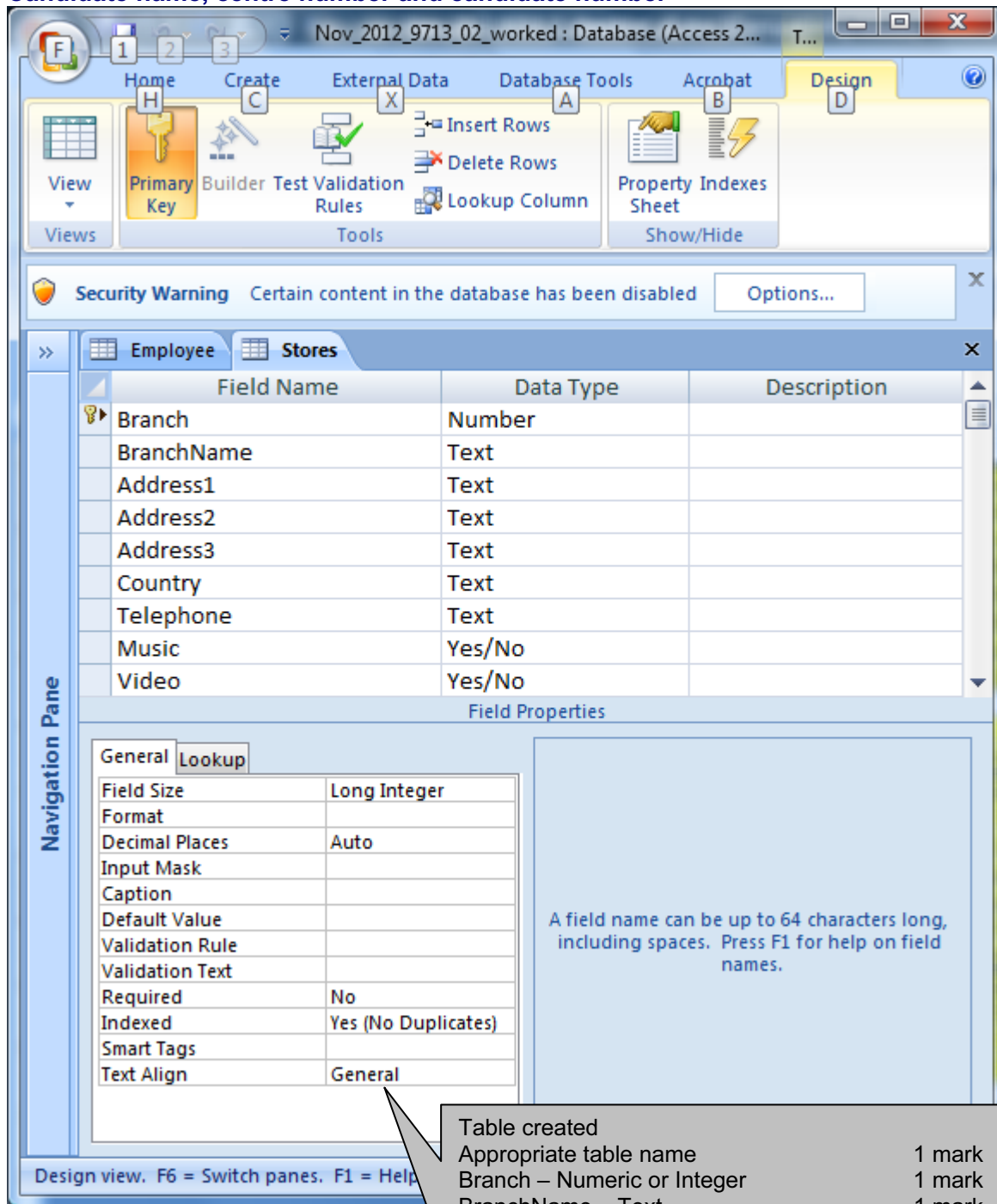


Table created	
Appropriate table name	1 mark
Branch – Numeric or Integer	1 mark
BranchName – Text	1 mark
Field name for address 1	1 mark
Field name for address 2	1 mark
Field name for address 3	1 mark
Country – Field type – Text	1 mark
Telephone – Field type - Text	1 mark
Music - Boolean	1 mark
Video – Field type - Boolean	1 mark
Branch set to primary key	1 mark

Page 4	Mark Scheme: Teachers' version	Syllabus	Paper
	GCE AS/A LEVEL – October/November 2012	9713	02

Candidate name, centre number and candidate number

Nov_2012_9713_02_worked : Database (Access 2007)

Home Create External Data Database Tools Acrobat Design

View Primary Key Builder Test Validation Rules Insert Rows Delete Rows Lookup Column Property Indexes Sheet Show/Hide

Security Warning Certain content in the database has been disabled Options...

Employee

Field Name	Data Type	Description
Payroll_ID	Number	
Forename	Text	
Surname	Text	
JobCode	Text	
BranchCode	Number	

Field Properties

General Lookup

Field Size	Long Integer
Format	
Decimal Places	Auto
Input Mask	
Caption	
Default Value	
Validation Rule	
Validation Text	
Required	No
Indexed	Yes (No Duplicates)
Smart Tags	
Text Align	General

A field name can be up to 64 characters long, including spaces. Press F1 for help on field names.

Design view. F6 = Switch panes. F1 = Help

- | | |
|---|---------|
| Appropriate table & field names | 2 marks |
| Payroll_ID - Field type – Numeric Integer | 2 marks |
| Forename - Field type - Text | 1 mark |
| Surname - Field type - Text | 1 mark |
| JobCode - Field type - Text | 1 mark |
| BranchCode - Field type – Numeric Integer | 2 marks |
| Payroll_ID set to primary key | 1 mark |

Page 5	Mark Scheme: Teachers' version	Syllabus	Paper
	GCE AS/A LEVEL – October/November 2012	9713	02

Candidate name, centre number and candidate number

>> **JOB**

Field Name	Data Type	
Job	Text	
Description	Text	
Department	Text	
PayType	Text	
RateOfPay	Currency	

Field Properties

Navigation Pane

General Lookup

Format	Euro
Decimal Places	2
Input Mask	
Caption	
Default Value	
Validation Rule	
Validation Text	
Required	
Indexed	
Smart Tags	
Text Align	

Appropriate table & field names 2 marks

Job - Field type - Text 1 mark

Description - Field type - Text 1 mark

Department - Field type - Text 1 mark

PayType - Field type - Text 1 mark

RateOfPay - Field type - Numeric/Currency, € with 2 decimal places 3 marks

Job set to primary key 1 mark

Design view. F6 = Switch panes. F1 = Help.

Page 6	Mark Scheme: Teachers' version	Syllabus	Paper
	GCE AS/A LEVEL – October/November 2012	9713	02

Candidate name, centre number and candidate number

Edit Relationships

Table/Query: Stores Related Table/Query: Employee

Branch BranchCode

☒ Enforce Referential Integrity

☐ Cascade Update Related Fields

☐ Cascade Delete Related Records

Relationship Type: One-To-Many

Buttons: OK, Cancel, Join Type.., Create New..

Correct fields
One-to-many

1 mark
1 mark

Edit Relationships

Table/Query: JOB Related Table/Query: Employee

Job JobCode

☒ Enforce Referential Integrity

☐ Cascade Update Related Fields

☐ Cascade Delete Related Records

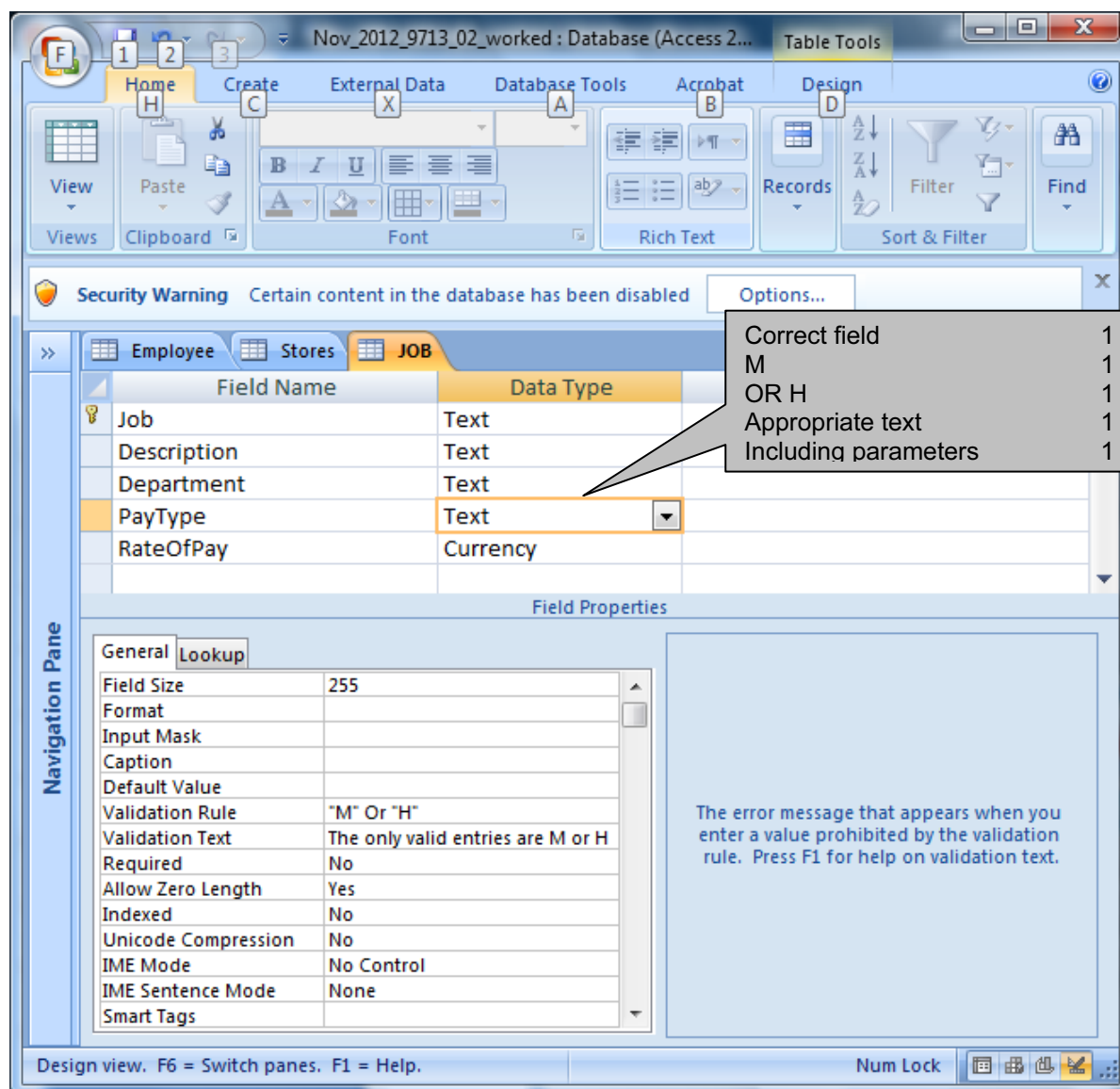
Relationship Type: One-To-Many

Buttons: OK, Cancel, Join Type.., Create New..

Correct fields
One-to-many

2 marks
1 mark

Page 7	Mark Scheme: Teachers' version	Syllabus	Paper
	GCE AS/A LEVEL – October/November 2012	9713	02



Page 8	Mark Scheme: Teachers' version	Syllabus	Paper
	GCE AS/A LEVEL – October/November 2012	9713	02

Correct field 1 mark

≥ 1500 1 mark

AND 1 mark

≤ 10000 1 mark

OR 1 mark

≥ 8 1 mark

AND 1 mark

≤ 20 1 mark

Appropriate text 1 mark

Including parameters 1 mark

Field Name Data Type

Job Text

Description Text

Department Text

PayType Text

RateOfPay Currency

Field Properties

General

Format Euro

Decimal Places 2

Input Mask

Caption

Default Value

Validation Rule Between 1500 And 10000 Or Between 8 And 20

Validation Text The values must be between 1500 and 10000 Euros, or between 8 and 20 Euros

Required No

Indexed No

Smart Tags

Text Align General

A field name can be up to 64 characters long, including spaces. Press F1 for help on field names.

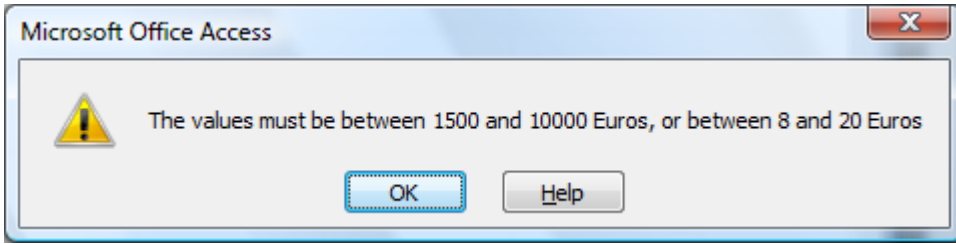
Design view. F6 = Switch panes. F1 = Help.

Caps Lock Num Lock Scroll Lock

Page 9	Mark Scheme: Teachers' version	Syllabus	Paper
	GCE AS/A LEVEL – October/November 2012	9713	02

Table added
4 by 4 table 1 mark
Title and text 100% accurate 1 mark

Testing the data entered is valid:

Data chosen	Type of data	Expected outcome	Actual outcome
e.g. 12	Normal	Works	Works
e.g. 7.99 OR Invalid data type	Abnormal	Error message	
e.g. 8, 20, 1500 OR 10000	Extreme	Works	Works

Normal data 1 mark
Correct example 1 mark
Expected to work 1 mark
Actual
Check against candidate's rule 1 mark

Abnormal data 1 mark
Correct example 1 mark
Expected to give error 1 mark
Actual – should be screen shot
Check against candidate's rule 1 mark

Extreme data 1 mark
Correct example 1 mark
Expected to work 1 mark
Actual
Check against candidate's rule 1 mark

Page 10	Mark Scheme	Syllabus	Paper
	GCE AS/A LEVEL – October/November 2012	9713	02

Step 14

Sales employees by branch

by a student, centre xxxx, cand no 9999

BranchName	JobCode	Description	Forename	Surname
------------	---------	-------------	----------	---------

Bangor

SP04	Sales Assistant grade 2	Ben	Brownlow
SP04	Sales Assistant grade 2	William	Bird
SP04	Sales Assistant grade 2	Theresa	Ed
SP05	Sales Assistant grade 3	Jenny	
SP07	Trainee Sales Assistant	Billy	M

Berlin

SP01	Sales Manager	Carmen	
SP03	Sales Assistant grade 1	Torsten	
SP04	Sales Assistant grade 2	Abigail	
SP05	Sales Assistant grade 3	Jorg	
SP05	Sales Assistant grade 3	Heine	
SP05	Sales Assistant grade 3	Dietmar	
SP05	Sales Assistant grade 3	Mathias	
SP06	Sales Assistant grade 4	Gert	
SP08	Floor manager	Karla	

Brugge

SP04	Sales Assistant grade 2	Jonas	
SP04	Sales Assistant grade 2	Ebba	
SP04	Sales Assistant grade 2	Tomas	
SP07	Trainee Sales Assistant	Louis	Claes

Clacton

SP04	Sales Assistant grade 2	Tizzy	Oldham
SP04	Sales Assistant grade 2	Shruti	Di Vizio
SP04	Sales Assistant grade 2	Siddharth	Gad
SP07	Trainee Sales Assistant	Tracy	Black

Devon

SP01	Sales Manager	Liam	O'Leary
SP03	Sales Assistant grade 1	David	Tobin
SP05	Sales Assistant grade 3	Fatima	Hegde
SP05	Sales Assistant grade 3	Karthilene	Platt
SP05	Sales Assistant grade 3	Matthias	O'Neil
SP05	Sales Assistant grade 3	Gertrude	Fischer
SP06	Sales Assistant grade 4	Priya	McTaggart
SP07	Trainee Sales Assistant	Govind	Dhrahid
SP09	Sales Team Leader	Dhruv	Hirasaka

Header:

Name & candidate details	1 mark
Title 100% correct	1 mark

Fields

BranchName	1 mark
Forename	1 mark
Surname	1 mark
Job code	1 mark
Job description	1 mark

Search

SP wildcard	2 marks
Grouped by branch name	1 mark
Sorted ascending on JobCode	1 mark
Data and labels fully visible	1 mark
A4	1 mark
Portrait	1 mark
Data from each branch not split over two pages	1 mark

Page 11	Mark Scheme	Syllabus	Paper
	GCE AS/A LEVEL – October/November 2012	9713	02

Dover

SP04	Sales Assistant grade 2	Emie	McGrew
SP04	Sales Assistant grade 2	Lynda	McPhee
SP07	Trainee Sales Assistant	Rick	Royle

Dresden

SP04	Sales Assistant grade 2	Karsten	Vogel
SP04	Sales Assistant grade 2	Dewang	Gupta
SP04	Sales Assistant grade 2	Felix	Sankt
SP07	Trainee Sales Assistant	Thora	Weissmuller

Dungarven

SP04	Sales Assistant grade 2	Michael	Green
SP04	Sales Assistant grade 2	Laura	Black
SP04	Sales Assistant grade 2	Maria	Petrioni
SP07	Trainee Sales Assistant	Laura	Bennett

Edinburgh

SP01	Sales Manager	Pat	Pushing
SP02	Deputy Sales Manager	Michael	Ross
SP04	Sales Assistant grade 2	Tracy	Royle
SP04	Sales Assistant grade 2	Karla	Browning
SP04	Sales Assistant grade 2	Pablo	Castro
SP04	Sales Assistant grade 2	Ankur	Drond
SP05	Sales Assistant grade 3	Elliot	Cotterill
SP05	Sales Assistant grade 3	Bobby	Green
SP05	Sales Assistant grade 3	Holly	Chase
SP05	Sales Assistant grade 3	Tim	Cock
SP05	Sales Assistant grade 3	Lola	Oldham
SP06	Sales Assistant grade 4	Tanya	Smith
SP06	Sales Assistant grade 4	Tracy	Smith
SP07	Trainee Sales Assistant	Robert	Springett

Granada

SP01	Sales Manager	Pedro	Garrido
SP03	Sales Assistant grade 1	Pedro	Lopez
SP05	Sales Assistant grade 3	Jorge	Lopez
SP05	Sales Assistant grade 3	Alfonso	Irizarry
SP05	Sales Assistant grade 3	Antonio	Rangel
SP05	Sales Assistant grade 3	Salvador	Garrido
SP05	Sales Assistant grade 3	Jorge	Toledo
SP06	Sales Assistant grade 4	Maria	Sisneros
SP07	Trainee Sales Assistant	Juan Carlos	Vega

Page 12	Mark Scheme	Syllabus	Paper
	GCE AS/A LEVEL – October/November 2012	9713	02

Hannover

SP04	Sales Assistant grade 2	Steffen	Johnson
SP04	Sales Assistant grade 2	Karoline	Strauss
SP04	Sales Assistant grade 2	Agathe	Thalberg
SP07	Trainee Sales Assistant	Otmar	Weber

Knightsbridge

SP01	Sales Manager	John	Bailiol
SP03	Sales Assistant grade 1	Annie	Rennie
SP04	Sales Assistant grade 2	Paul	Clarke
SP05	Sales Assistant grade 3	Don	Govahi
SP05	Sales Assistant grade 3	Siddharth	Afana
SP05	Sales Assistant grade 3	Kate	Gerard
SP05	Sales Assistant grade 3	Toni	Fernandez
SP06	Sales Assistant grade 4	Adheesh	Agrawal
SP08	Floor manager	Claire	Turner

Malaga

SP04	Sales Assistant grade 2	Eli	Mejka
SP04	Sales Assistant grade 2	Pilar	Pagan
SP04	Sales Assistant grade 2	Christal	Tello
SP07	Trainee Sales Assistant	Adelina	Mondragón

Margate

SP04	Sales Assistant grade 2	Mohamed	Bansal
SP04	Sales Assistant grade 2	Suzanne	Miller
SP04	Sales Assistant grade 2	Lu	Wang
SP07	Trainee Sales Assistant	Shashank	Ashwani

Munich

SP04	Sales Assistant grade 2	Olga	Schneider
SP04	Sales Assistant grade 2	Gertrud	Scherer
SP04	Sales Assistant grade 2	Maria	Schiffer
SP04	Sales Assistant grade 2	Fritz	Bumgarner
SP07	Trainee Sales Assistant	Oral	Strauss
SP07	Trainee Sales Assistant	Friederike	Trommler

Newry

SP04	Sales Assistant grade 2	Marcus	Adams
SP04	Sales Assistant grade 2	Eugenio	Lopez
SP04	Sales Assistant grade 2	Michael	Smith
SP07	Trainee Sales Assistant	Peter	Ryder

Pontypridd

SP04	Sales Assistant grade 2	Lydia	Blenkinsop
SP04	Sales Assistant grade 2	Holly	Jenkinson
SP04	Sales Assistant grade 2	Taran	Hafez

Page 13	Mark Scheme	Syllabus	Paper
	GCE AS/A LEVEL – October/November 2012	9713	02

SP07	Trainee Sales Assistant	Greg	Maury
Rotherham			
SP01	Sales Manager	Chin	Tao
SP03	Sales Assistant grade 1	Carla	Black
SP05	Sales Assistant grade 3	Tia	Tang
SP05	Sales Assistant grade 3	Dhruv	Dev
SP05	Sales Assistant grade 3	Summer	Kacaratchi
SP05	Sales Assistant grade 3	Teng	Dev
SP06	Sales Assistant grade 4	Steve	Miller
SP07	Trainee Sales Assistant	Sue	Sparks
SP09	Sales Team Leader	Helen	Cooper
Uxbridge			
SP04	Sales Assistant grade 2	Patrick	Oldfield
SP04	Sales Assistant grade 2	Michael	Bresnan
SP04	Sales Assistant grade 2	Azie	Antonios
SP07	Trainee Sales Assistant	Peter	White
Venice			
SP04	Sales Assistant grade 2	Adone	Francisco Javier
SP04	Sales Assistant grade 2	Kevin	Sgro
SP04	Sales Assistant grade 2	Mauro	Ricciotti
SP07	Trainee Sales Assistant	Jens	Malo
Wurzburg			
SP04	Sales Assistant grade 2	Karin	Nacht
SP04	Sales Assistant grade 2	Gerhardt	Weissmuller
SP04	Sales Assistant grade 2	Fritz	Roth
SP07	Trainee Sales Assistant	Nina	Weiss
York			
SP04	Sales Assistant grade 2	Dave	Brown
SP04	Sales Assistant grade 2	Kiera	Watson
SP04	Sales Assistant grade 2	Susan	Bland
SP07	Trainee Sales Assistant	Kratika	Dhiman

Page 14	Mark Scheme	Syllabus	Paper
	GCE AS/A LEVEL – October/November 2012	9713	02

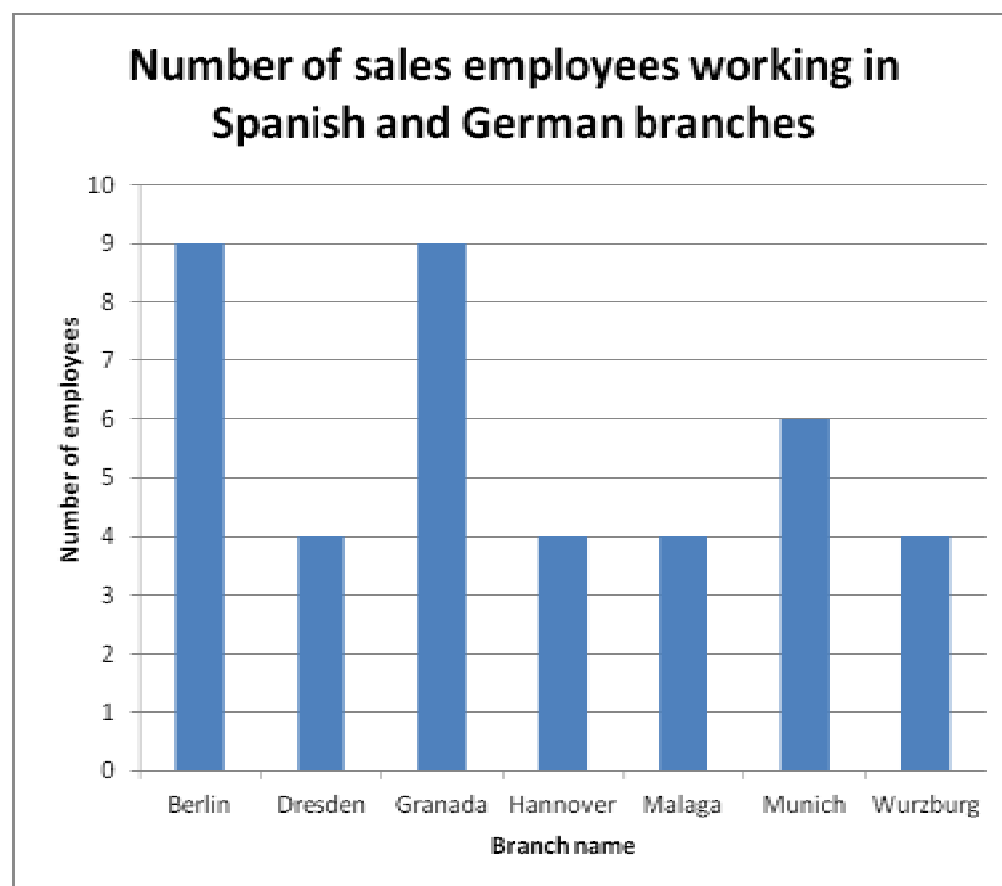
Step 15 by A Student Centre xxxx Candidate 9999

Branch name	Count of Sales staff	
Berlin	9	
Granada	9	
Munich	6	
Dresden	4	
Hannover	4	
Malaga	4	
Wurzburg	4	
	40	

12 September 2010

Header	
Name & numbers	1 mark
Fields	
Branch name	1 mark
Count	1 mark
Data - Correct counts	1 mark
Search	
Spain	1 mark
OR Germany	1 mark
Sorted	
Descending - No of sales	1 mark
Ascending - branch name	1 mark
Total number correct	1 mark
At bottom of report	1 mark

Page 15	Mark Scheme	Syllabus	Paper
	GCE AS/A LEVEL – October/November 2012	9713	02



Candidate name, centre number and candidate number

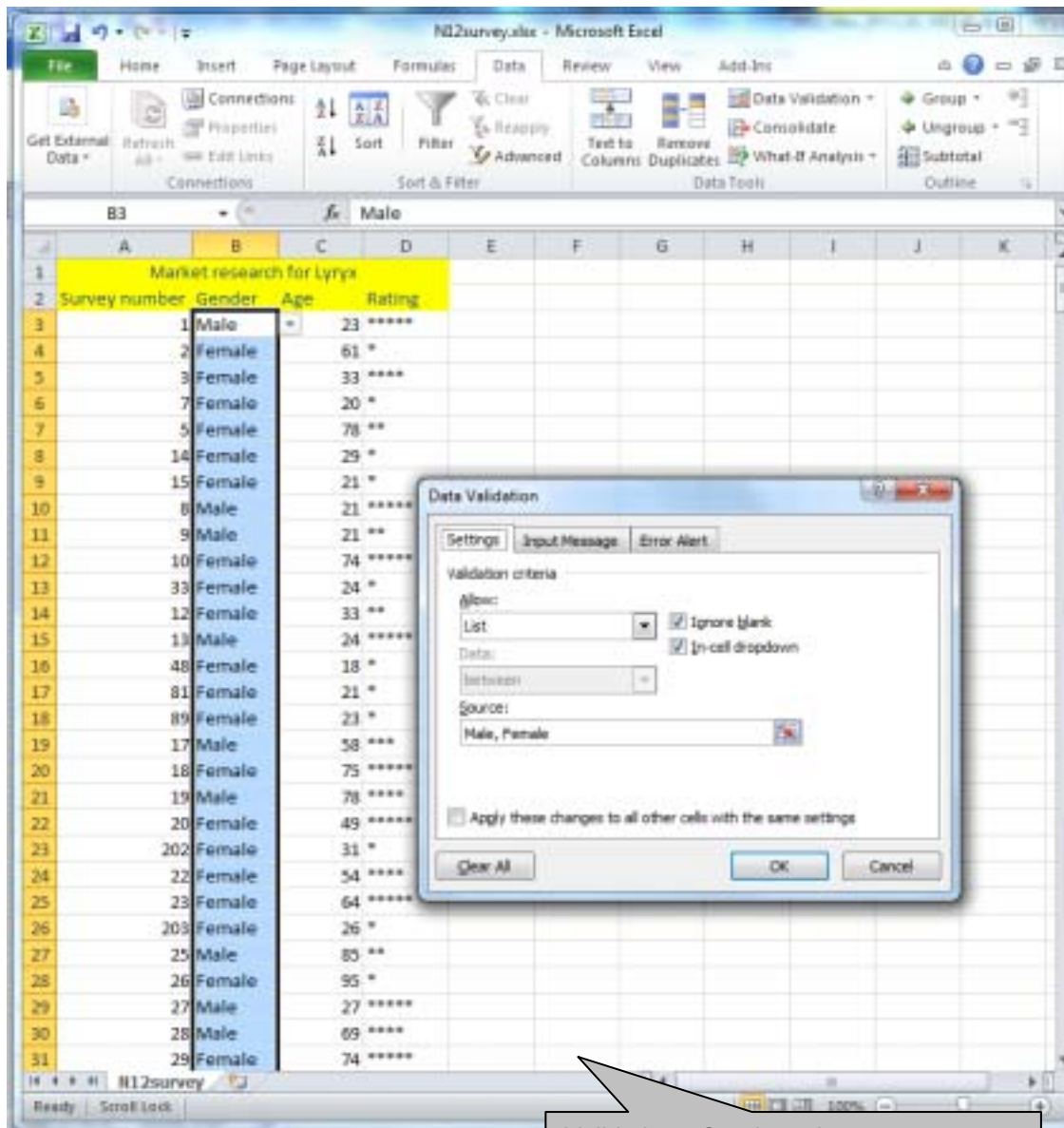
Title	
Appropriate & meaningful	1 mark
Footer	
Name and numbers	1 mark
Chart type	
Appropriate	2 marks
Values Correct	1 mark
Value axis	
Appropriate title & scale	1 mark
Category axis	
Appropriate title & labels	1 mark

Page 16	Mark Scheme	Syllabus	Paper
	GCE AS/A LEVEL – October/November 2012	9713	02

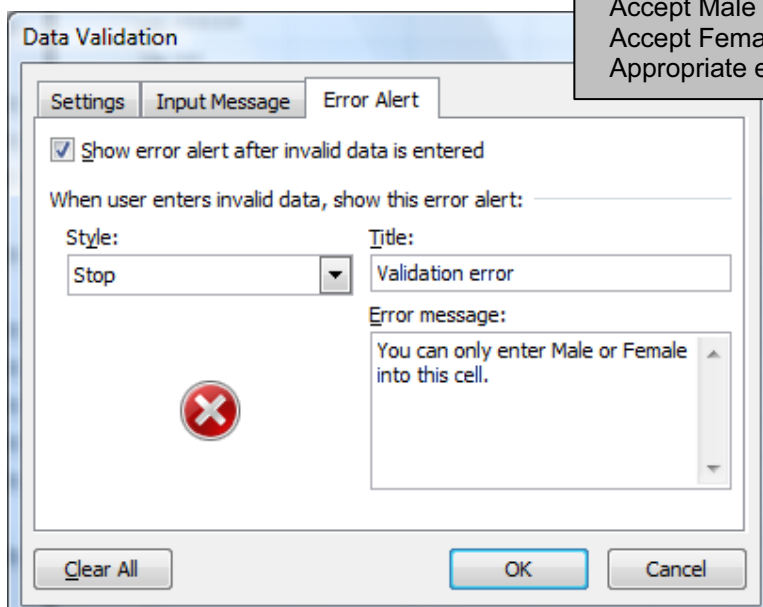
Top 2 rows
Selection of cells 1 mark
Background colour yellow 1 mark

Top 2 rows
Selection of cells 1 mark
Font dark blue 1 mark

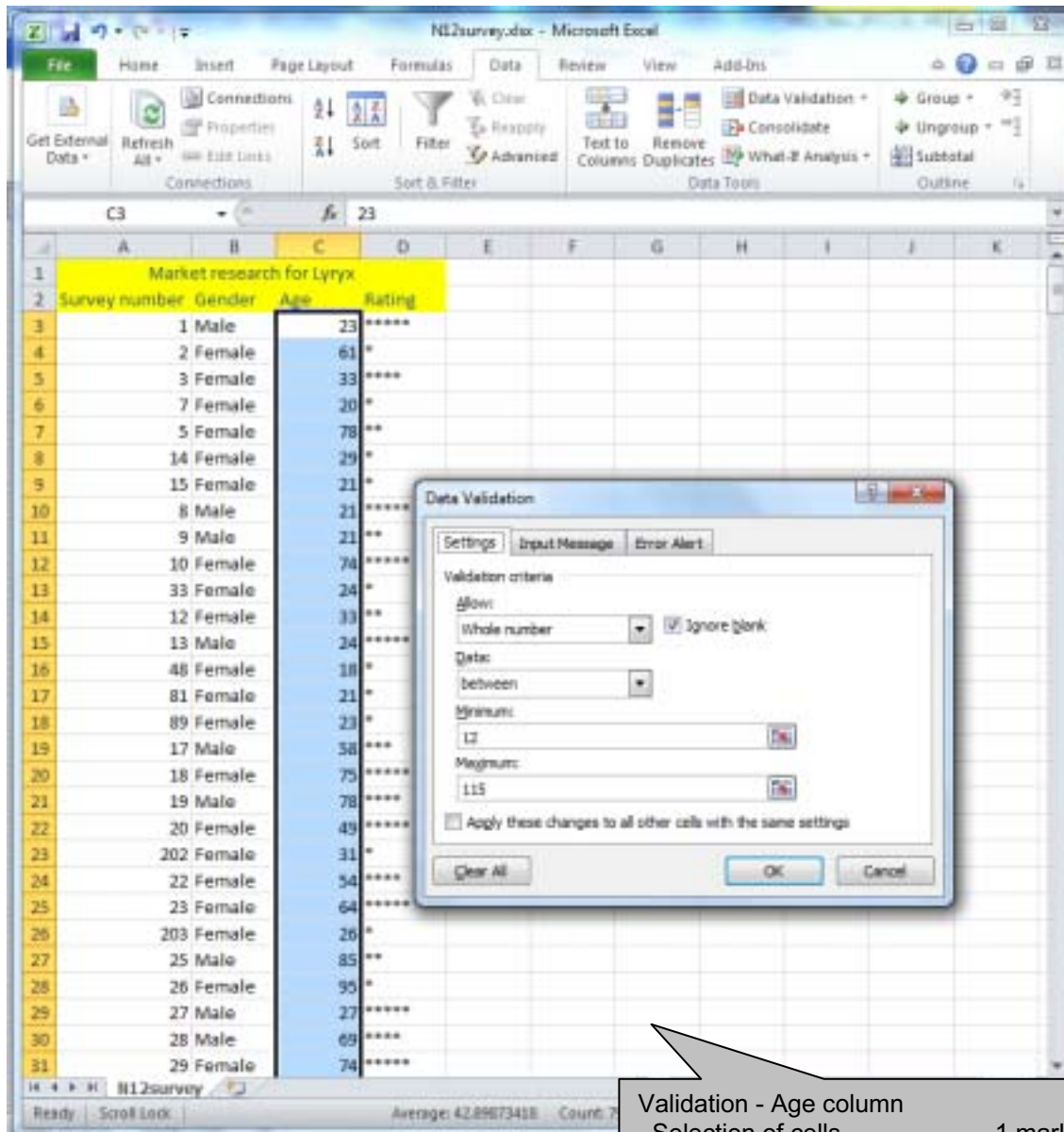
Page 17	Mark Scheme	Syllabus	Paper
	GCE AS/A LEVEL – October/November 2012	9713	02



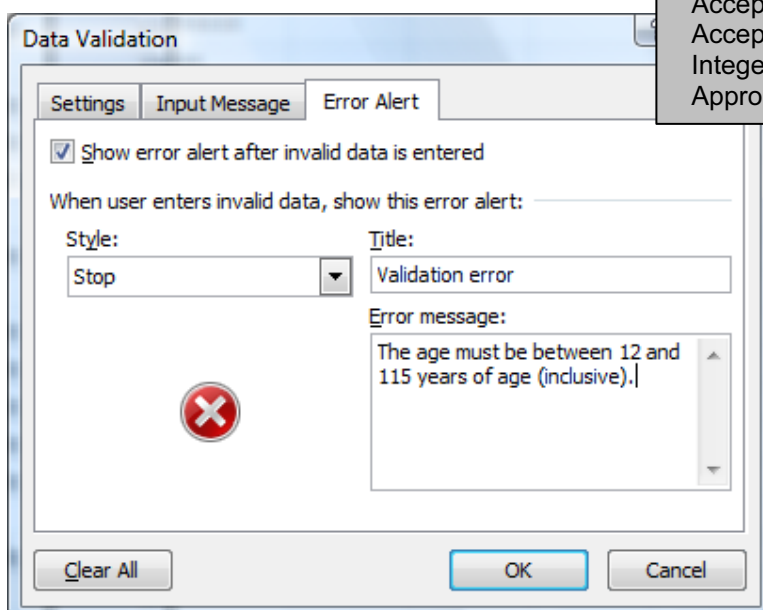
Validation - Gender column
 Selection of cells 1 mark
 Accept Male 1 mark
 Accept Female 1 mark
 Appropriate error message 1 mark



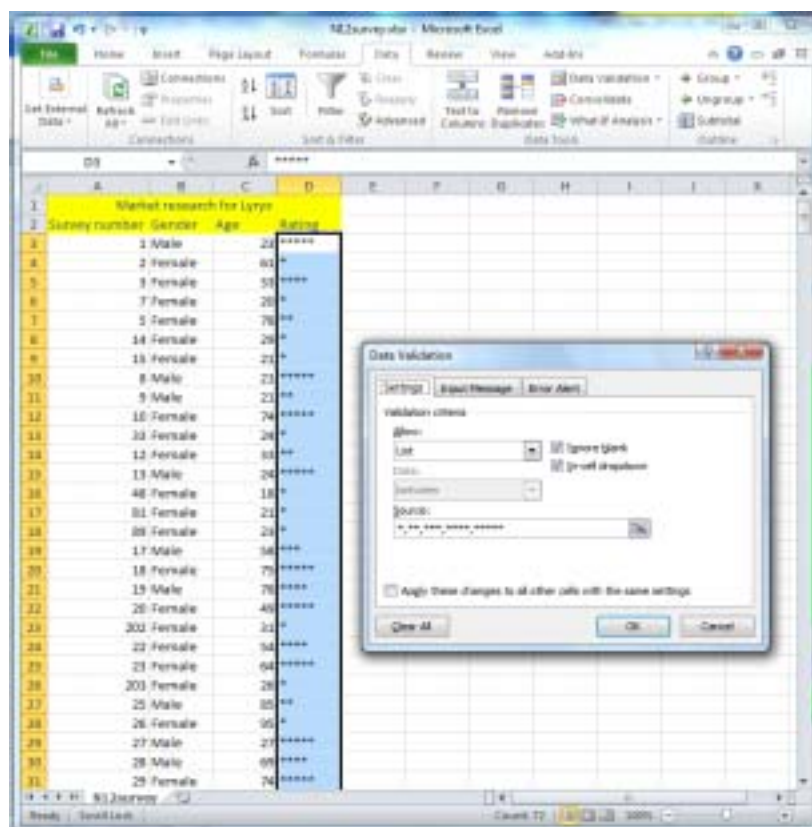
Page 18	Mark Scheme	Syllabus	Paper
	GCE AS/A LEVEL – October/November 2012	9713	02



- Validation - Age column
- Selection of cells 1 mark
 - Accept ≥ 12 (AND) 1 mark
 - Accept ≤ 115 1 mark
 - Integer values only 1 mark
 - Appropriate error message 1 mark



Page 19	Mark Scheme	Syllabus	Paper
	GCE AS/A LEVEL – October/November 2012	9713	02



Candidate name, Centre number, candidate number

Market research for Lyrx			
Survey number	Gender	Age	Rating

1	Male	23	*****
2	Female	61	*****
3	Female	33	*****
4	Female	25	****
5	Female	78	**
6	Female	22	**
7	Female	20	*
8	Male	21	*****
9	Male	21	**
10	Female	74	*****
11	Female	20	***
12	Female	33	**
13	Male	24	*****
14	Female	29	*
15	Female	21	*
16	Female	20	*****
17	Male	58	***
18	Female	75	*****
19	Male	78	****
20	Female	49	*****
21	Female	24	***

Validation - Rating column
Only * to *****

2 marks

Spreadsheet model
Created for 500 entries 1 mark
Data from J12survey.CSV 1 mark
Top row
4 cells merged 1 mark
Centre aligned 1 mark
All contents fully visible for first & last
pages only with candidate details in header 1 mark

Page 20	Mark Scheme	Syllabus	Paper
	GCE AS/A LEVEL – October/November 2012	9713	02

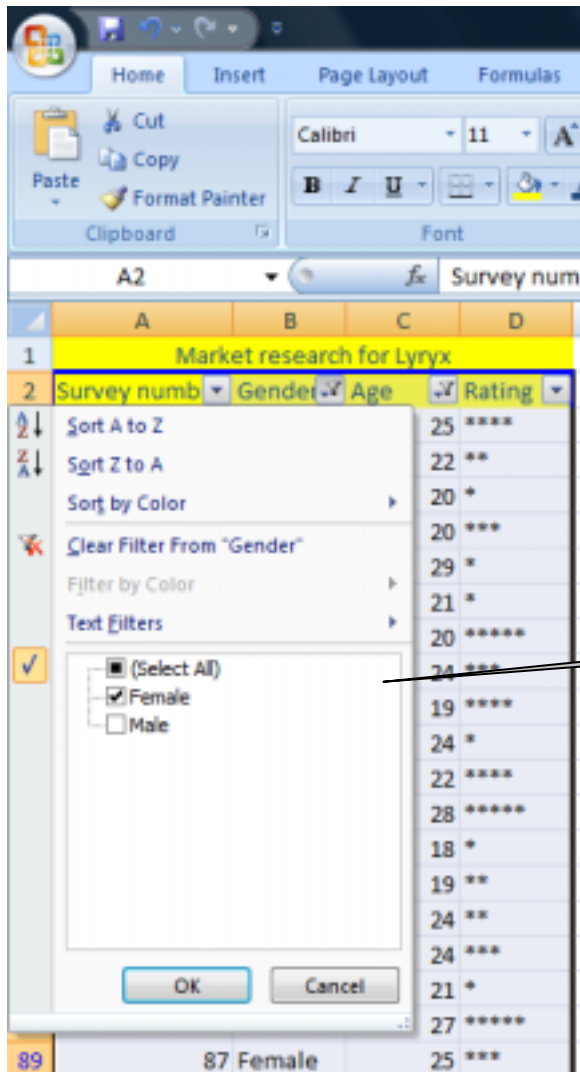
458	Female	13	*
459	Male	16	****
460	Male	31	**
461	Male	25	***
462	Female	29	***
463	Female	38	*****
464	Female	19	***
465	Male	36	****
466	Female	21	**
467	Male	41	****
468	Female	13	*****
469	Male	29	*****
470	Female	20	****
471	Male	39	***
472	Female	40	**
473	Female	40	*
474	Female	23	****
475	Female	24	*
476	Female	14	*
477	Female	21	**
478	Female	26	*
479	Female	17	***
480	Male	22	****
481	Male	13	***
482	Female	40	**
483	Female	31	**
484	Female	29	***
485	Male	27	**
486	Female	35	*
487	Female	12	*
488	Female	14	**
489	Male	32	****
490	Female	29	*****
491	Male	34	*****
492	Female	35	****
493	Female	40	**
494	Female	33	****
495	Female	15	****
496	Female	32	***
497	Male	37	**
498	Female	40	**
499	Male	37	*
500	Male	30	***

Page 21	Mark Scheme	Syllabus	Paper
	GCE AS/A LEVEL – October/November 2012	9713	02

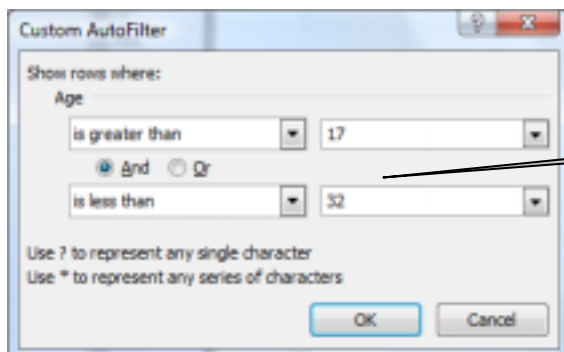
Step 27

Answer

Correct answer
With evidence of method 1 mark



Search - Female 1 mark



Search - - >17 and <32 1 mark